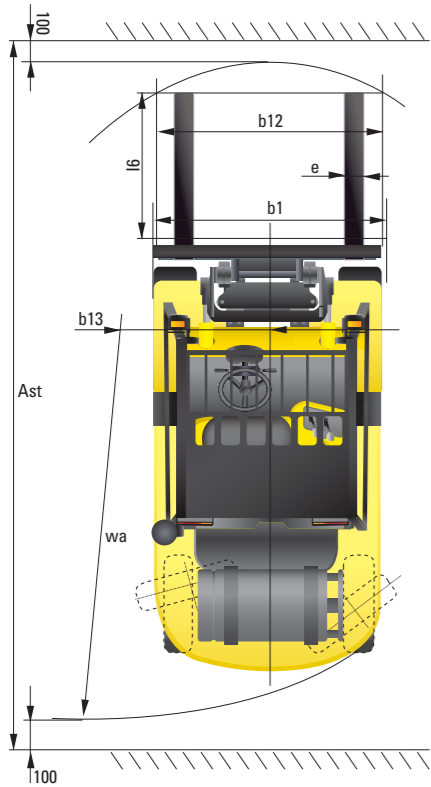
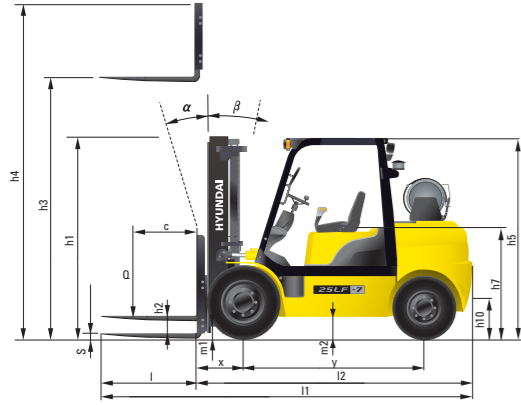


## Dimension



## Specification

Identification				
1.1	Manufacturer	Hyundai	Hyundai	Hyundai
1.2	Manufacturer's type designation	25LF-7	30LF-7	33LF-7
1.3	Drive: electric (battery or mains), diesel, petrol, fuel gas, manual	LP / LP-Gas	LP / LP-Gas	LP / LP-Gas
1.4	Type of operation: hand, pedestrian, standing, seated, order-picker	seated	seated	seated
1.5	Load capacity / rated load	Q (kg) 2,500	3,000	3,300
1.6	Load center distance	c (mm) 500	500	500
1.8	Load distance, center of drive axle to fork	x (mm) 468	468	468
1.9	Wheelbase	y (mm) 1,650	1,700	1,700
Weights				
2.1	Service weight	kg 3,706	4,196	4,439
2.2	Axle loading, loaded front/rear	kg 5,452 / 753	6,287 / 910	6,745 / 994
2.3	Axle loading, unloaded front/rear	kg 1,486 / 2,220	1,578 / 2,618	1,566 / 2,873
Wheels, Chassis				
3.1	Tires: solid rubber, superplastic, pneumatic, polyurethane	Pneumatic	Pneumatic	Pneumatic
3.2	Tires size, front	7.00 - 12 - 12PR	8.15 x 15 - 14PR	8.15 x 15 - 14PR
3.3	Tires size, rear	6.00 - 9 - 10PR	6.50 - 10 - 12PR	6.50 - 10 - 12PR
3.5	Wheels, number front x rear (x = driven wheels)	2 x 2	2 x 2	2 x 2
3.6	Track width, front	b10 (mm) 965	1,005	1,005
3.7	Track width, rear	b11 (mm) 980	980	980
Basic Dimensions				
4.1	Mast / fork carriage tilt forward / backward (α / β) degrees	6 / 10	6 / 10	6 / 10
4.2	Lowered mast height	h1 (mm) 2,175	2,190	2,190
4.3	Free lift	h2 (mm) 155	155	155
4.4	Lift height	h3 (mm) 3,300	3,300	3,200
4.5	Extended mast height	h4 (mm) 4,485	4,485	4,385
4.7	Overhead load guard (cab) height	h5 (mm) 2,160	2,180	2,180
4.8	Seat height / standing height	h7 (mm) 1,110	1,130	1,130
4.12	Coupling height	h10 (mm) 283	299	299
4.19	Overall length	l1 (mm) 3,644	3,742	3,782
4.20	Length to face of forks	l2 (mm) 2,594	2,692	2,732
4.21	Overall width	b1 (mm) 1,160	1,230	1,230
4.22	Fork dimensions	s / e / l (mm) 1,050 x 100 x 45	1,050 x 122 x 45	1,050 x 122 x 45
4.23	Fork carriage ISO 2328, class / type A,B	II / A	III / A	III / A
4.24	Fork-carriage width	b12 (mm) 1,102	1,102	1,102
4.31	Ground clearance, loaded, under mast	m1 (mm) 130	145	145
4.32	Ground clearance, centre of wheelbase	m2 (mm) 171	189	189
4.33	Aisle width for pallets 1000 x 1200 crossways	Ast (mm) 3,966	4,066	4,102
4.34	Aisle width for pallets 800 x 1200 lengthways	Ast (mm) 4,166	4,266	4,302
4.35	Turning radius	Wa (mm) 2,298	2,398	2,434
4.36	Smallest pivot point distance	b13 (mm) 714	731	731
Performance Data				
5.1	Travel speed, Unloaded	km/h 17.7	18.6	18.6
5.2	Lift speed, Loaded/Unloaded	mm/s 600 / 610	580 / 610	480 / 510
5.3	Lowering speed, Loaded/Unloaded	mm/s 500 / 450	500 / 450	500 / 450
5.5	Drawbar pull, Loaded	kg 2,412	2,297	2,302
5.7	Gradient performance, Loaded	% 37.1	29.8	27.6
5.9	Acceleration time, loaded/unloaded (10m)	sec NA	NA	NA
5.10	Service brake	FOOT	FOOT	FOOT
Engine				
6.1	Engine manufacturer / type	HMC L4KB	HMC L4KB	HMC L4KB
6.2	Engine power acc. to ISO 1585	kW 44	44	44
6.3	Rated speed	1/min 2,300	2,300	2,300
6.4	No. of cylinder / cubic capacity	/cm <sup>3</sup> 4 / 2,359	4 / 2,359	4 / 2,359
Other Details				
8.2	Type of drive control	Power Shift	Power Shift	Power Shift
8.3	Operating pressure	bar 220 / 165	220 / 165	220 / 165
8.4	Oil volume	ℓ 30	30	30
8.5	Noise	db(A) 80	80	80



Some of the photos may include optional equipment.

We build a better future

## HYUNDAI FORKLIFT

HEAVY INDUSTRIES CO., LTD.

Head Office (Sales Office)  
14th FL., HYUNDAI BLDG. 140-2, KYE-DONG, JONGNO-GU, SEOUL, KOREA 110-793  
TEL (82) (2) 746-4526, 4529 FAX (82) (2) 746-7444-7445

Americas Operation : Hyundai Construction Equipment Americas, Inc.  
6100 ATLANTIC BOULEVARD NORCROSS GA 30071 U.S.A TEL (1) 847-678-823-7802 FAX (1) 847-678-823-7778

Europe Operation : Hyundai Heavy Industries Europe N.V.  
VOSSENDAAL 11, 2440 GEEL, BELGIUM TEL (32) 14-56-2200 FAX (32) 14-59-3405



PLEASE CONTACT

www.hyundai-ce.com

2013.05 Rev.0

HYUNDAI LPG / GASOLINE FORKLIFT TRUCKS

# 25/30/33LF-7

**HYUNDAI**  
HEAVY INDUSTRIES CO., LTD.

# NEW criteria of Forklift Trucks

Hyundai introduces a new line of 7series  
LPG / Gasoline forklift trucks.  
Excellent power and performance make your  
business more profitable.



### OPSS (Operator Presence Sensing System)

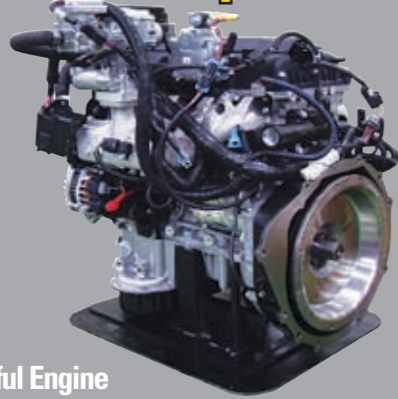
Control of mast tilting, lifting and lowering is not possible through operation of the appropriate control when the operator is not in the seated position. (Option)

■ Some of the photos may include optional equipment.

## The new master on the job-site!

Smooth running, efficient and ergonomically designed, 25/30/33LF-7 series are made to meet your needs.

**44kW/2,300rpm**



### Powerful Engine HMC L4KB(2.4L) Engine

Market approved quality of HMC L4KB engine ensures incomparable performance, durability and additional value to the machine. Powerful and efficient engine provides excellent fuel consumption and excellent torque improved operator's comfort.

### Fast and Stable Performance

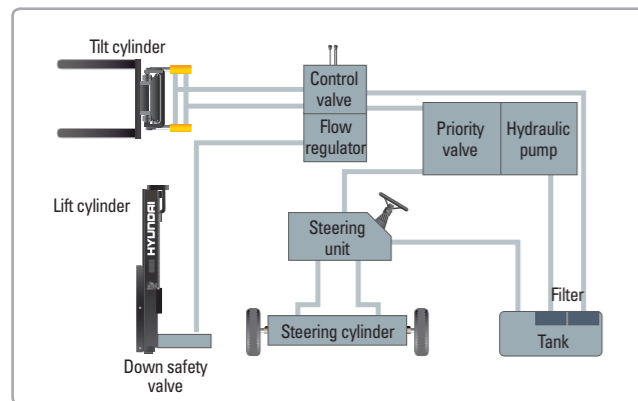
Being able to quickly raise and lower the mast, as well as tilt it forward and backward, provides the best operational conditions during unloading.

When the truck is fully loaded, mast lowering speed is carefully controlled to ensure safety by the down control valve.

Mast(Lift and Tilt) Look System. (Option)



Some of the photos may include optional equipment.



### State-of-the-art Hydraulic System

The latest large-capacity hydraulic system reacts quickly during operation, and a low-noise control valve increases both efficiency and durability.



### Fully Hydrostatic Power Steering

A hydraulic steering system always guarantees smooth and flexible steering, preventing overrun and kick-back.



### Increased Mast Tilting Angle

Utilizing the mast tilting angle of 6 degrees forward and 10 degrees backward, the operator can safely and rapidly perform loading and unloading jobs.

### Faster Travel Speed & Better Gradability

The powerful high-output engine provides greater acceleration, better gradability and faster travel speed on any tough terrains or slopes.



### Gradability(Loaded)

- 25LF-7 : 20.4%
- 30LF-7 : 16.6%
- 33LF-7 : 15.4%

### Travel Speed(Unloaded)

- 25LF-7 : 17.7 mph
- 30LF-7 : 18.6 mph
- 33LF-7 : 18.6 mph

# Ergonomic operator friendly compartment design!

A design based on human engineering relieves fatigue and increases operator's efficiency.

## Operator Friendly Gauges and Water-resistant Monitor Panel



- ① Parking brake lamp
- ② Directional indicators
- ③ Fuel warning lamp
- ④ Engine oil warning lamp
- ⑤ Transmission oil temperature warning lamp
- ⑥ Battery charging warning lamp
- ⑦ Air cleaner filter warning light
- ⑧ Working light indicator
- ⑨ Water separator lamp
- ⑩ Pre-heater indicator
- ⑪ Water temperature gauge
- ⑫ Fuel gauge
- ⑬ Hour meter
- ⑭ Engine check lamp
- ⑮ Brake oil warning lamp
- ⑯ Seat belt warning
- ⑰ OPS warning (option)



### New High Visibility for Safe Operation

The operator is able to work with increased safety and accuracy due to a wider view mast.

## Full suspension seat



An attractive and adjustable seat, based on a human engineering design, provides great comfort, safety and durability.

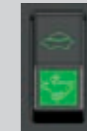
## Grammer Seat (Option)



- Quick Achievement of the Ergonomically Best Sitting Position
- Asymmetrical Backrest
- Movable Armrests
- Practical Document Box
- Seat Heating



### Travel Speed Control System (Option)



- ← In-Door : Max. Travel Speed (16 km/h)
- ← Out-Door : Max Travel Speed (Max vehicle speed)

Some of the photos may include optional equipment.



### Ergonomically Positioned Pedals

Based on human engineering, the accelerator, brake and inching pedals are optimally positioned for convenience while operating the equipment.



### Cup Holder & Console Box

Additional storage spaces are located inside the operating space for operator's convenience.



### Quick Response of Operating Control Levers

Only minimal operator's effort is required for precise, safe and productive control.



### Adjustable Steering Wheel

Steering wheel with horn button can be adjusted by a lever on the right-hand side for the most comfortable operator position.



### Easy and Safe Shift Lever

A single lever on the left side of the steering column gives the operator fast, easy control of direction. The lever must be in the neutral position before the engine can be started.



### Secondary Horn

Secondary Horn gives access to lights and horn.

## Danger-free through high durability!

Safety and durability are priorities in design of the equipment.



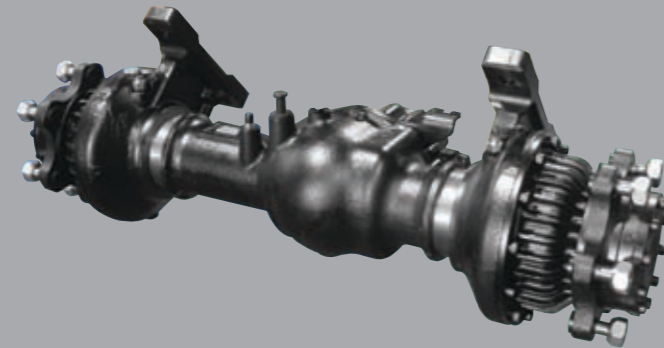
### Strong Overhead Guard

The safety overhead guard meets ISO 6055 regulation and protects the operator during hazardous jobs.



### Parking Brake

Ratchet type parking brake requires less effort from the operator to set.



### Highly Durable Split Type Drive Axle

The bevel gear set and hub reduction axle smoothly delivers desired torque to the drive wheels.



Some of the photos may include optional equipment.



### Large Footboard & Hand Grip

Wide "open" step offers convenience and safety when entering and exiting truck.



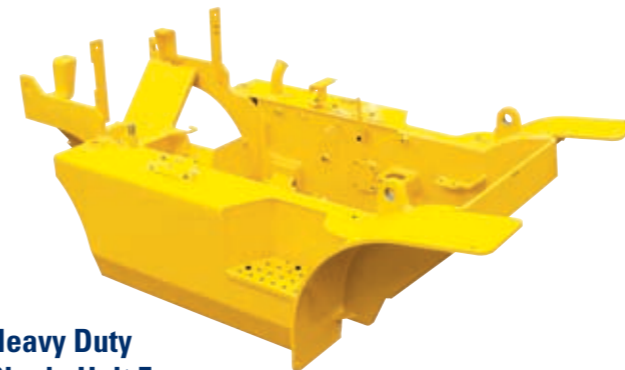
### Expansion Bellows

The expansion bellows absorbs vibration and reduces noise generated from the exhaust gas system and also extends the life cycle of exhaust gas system.



### Electrically Monitored Air Filter

Air cleaner sensor alerts the operator of a restricted air filter and allows replacement before damage.



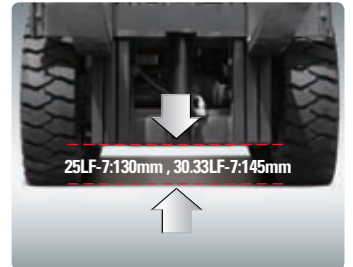
### Heavy Duty Single Unit Frame

Heavy duty single unit type frame, designed on the basis of accurate structural analysis, guarantees durability and safety.



### Bright, Protected Headlights

Bright, Protected head lights are positioned for exceptional visibility.



### Ground Clearance

The engine and transmission are assembled horizontally and positioned high in the frame to protect major components during operation on rugged surface.

# Designed for quick and easy service!

An ideal arrangement of component parts ensures easy access and convenience for maintenance.



### Easy Change Air Cleaner

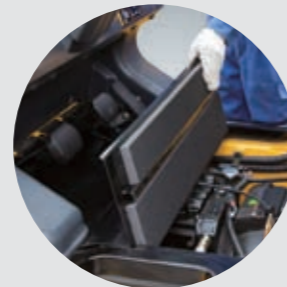
The air filter is readily accessible for cleaning or replacement. (6inch Cyclone Type)



### Fast Service Access for Daily Fluids Check



**Rotational Battery Installation**



**One Touch, No Tool Floor Plate**



**Removable Side Panels for Ease of Service**



### Improvement in Maintenance of Electric Parts

Various electric parts are centralized in dash board resulting in effortless troubleshooting.



### Easy Maintenance Oil Check

The T/M oil level can be checked easily without any disassembly.



### Brake Fluid Reservoir with Level Switch

When brake oil level become lower than Min. the warning lamp on the cluster lights on.



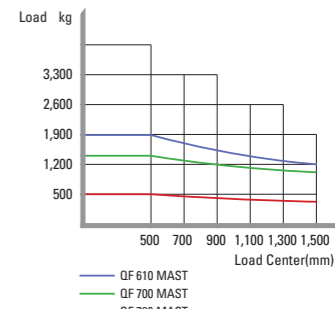
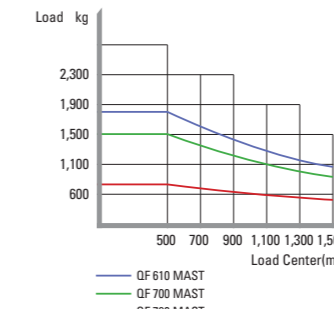
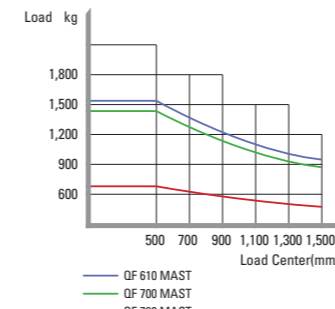
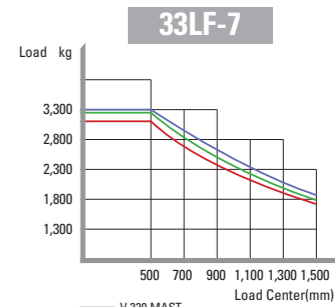
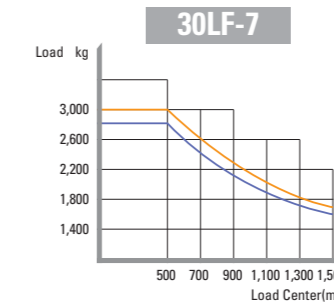
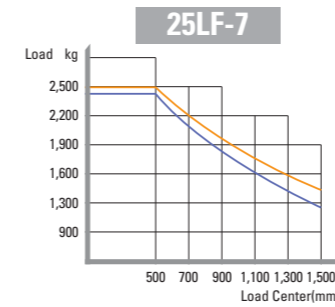
### An Accessible, Compact Fuse Box for Easy Inspection

## Mast Specification

Mast Type	Maximum Fork Height (mm)	Overall Height Lowered (mm)		Free Lift (mm)						Tilt Angle (deg)		Load Capacity w/ o Integral Side Shift 500mm LC (kg)						Load Capacity w/ Integral Side Shift 500mm LC (kg)						Truck Weight Unload (kg)													
		33LF-7		25LF-7		30LF-7		33LF-7		Fwd	Bwd	Single Tire			Double Tire			Single Tire			Double Tire			Single Tire			Double Tire										
		25LF-7	30LF-7	25LF-7	30LF-7	25LF-7	30LF-7	25LF-7	30LF-7			25LF-7	30LF-7	25LF-7	30LF-7	25LF-7	30LF-7	25LF-7	30LF-7	25LF-7	30LF-7	25LF-7	30LF-7	25LF-7	30LF-7	25LF-7	30LF-7	25LF-7	30LF-7								
2-Stage Limited Free Lift	V300	3000	2900	2025	2040	2040	155	155	155	155	155	6	10	2500	3000	3300	2500	3000	3300	2500	3000	3300	2500	3000	3300	2500	3000	3300	2500	3000	3300	3747	4247	4415	3883	4334	4512
	*V330	3300	3200	2175	2190	2190	155	155	155	155	155	6	10	2500	3000	3300	2500	3000	3300	2500	3000	3300	2500	3000	3300	2500	3000	3300	3766	4268	4439	3902	4354	4536			
	V350	3500	3400	2275	2290	2290	155	155	155	155	155	6	10	2500	3000	3300	2500	3000	3300	2500	3000	3300	2500	3000	3300	2500	3000	3300	3783	4285	4454	3919	4372	4551			
	V370	3700	3600	2425	2440	2440	155	155	155	155	155	6	10	2500	3000	3300	2500	3000	3300	2500	3000	3300	2500	3000	3300	2500	3000	3300	3805	4308	4478	3941	4395	4575			
	V400	4000	3900	2575	2590	2590	155	155	155	155	155	6	10	2450	3000	3300	2500	3000	3300	2475	2950	3200	2500	2975	3300	2475	2950	3200	3835	4339	4510	3971	4426	4607			
	V430	4300	4200	2725	2740	2740	155	155	155	155	155	6	6	2400	2925	3200	2475	3000	3300	2400	2875	3100	2450	2925	3300	2400	2875	3100	3887	4392	4564	4023	4478	4661			
2-Stage Full Free Lift	V450	4500	4400	2875	2890	2890	155	155	155	155	155	6	6	2350	2875	3150	2425	2950	3300	2350	2825	3020	2400	2875	3300	2350	2825	3020	3909	4414	4587	4045	4501	4684			
	V470	4700	4600	2975	2990	2990	155	155	155	155	155	6	6	2325	2825	3100	2400	2925	3300	2325	2750	3000	2375	2825	3200	2325	2750	3000	3923	4430	4603	4060	4516	4700			
	V500	5000	4900	3125	3140	3140	155	155	155	155	155	6	6	2250	2775	3050	2350	2850	3250	2275	2700	2930	2350	2775	3150	2275	2700	2930	3945	4452	4627	4082	4539	4724			
	VF290	2932	2900	2025	2040	2090	845	860	910	845	1314	1269	6	6	2500	3000	3300	2500	3000	3300	2500	3000	3300	2500	3000	3300	2500	3000	3300	3792	4288	4459	3929	4374	4550		
	VF320	3232	3200	2175	2190	2240	995	1010	1060	995	1464	1419	6	6	2500	3000	3300	2500	3000	3300	2500	3000	3300	2500	3000	3300	2500	3000	3300	3826	4323	4494	3963	4409	4585		
	3-Stage Full Free Lift	TF370/TS370	3700	3700	1825	1840	1890	645	660	710	645	1114	1069	6	6	2460	3000	3250	2500	3000	3300	2450	2900	3150	2500	2950	3300	2450	2900	3150	3883	4397	4602	4020	4483	4693	
TF400/TS400		4000	4000	1925	1940	1990	745	760	810	745	1214	1169	6	6	2400	2925	3160	2475	3000	3300	2400	2850	3040	2450	2900	3300	2400	2850	3040	3907	4422	4624	4044	4508	4715		
TF430/TS430		4300	4300	2025	2040	2090	845	860	910	845	1314	1269	6	6	2350	2850	3100	2425	2925	3300	2350	2775	3000	2400	2825	3200	2350	2775	3000	3925	4444	4644	4062	4530	4735		
TF450/TS450		4500	4500	2125	2140	2190	945	960	1010	945	1414	1369	6	6	2300	2800	3030	2300	2875	3250	2325	2725	2920	2350	2775	3150	2325	2725	2920	3947	4469	4666	4084	4555	4757		
TF470/TS470		4700	4700	2175	2190	2240	995	1010	1060	995	1464	1419	6	6	2250	2775	3000	2350	2825	3200	2275	2675	2900	2300	2725	3100	2275	2675	2900	3960	4483	4680	4097	4569	4771		
TF500/TS500		5000	5000	2275	2290	2340	1095	1110	1160	1095	1564	1519	6	6	2200	2700	2940	2275	2775	3125	2200	2600	2840	2275	2675	3030	2200	2600	2840	3983	4506	4702	4120	4592	4793		
4-Stage Full Free Lift	TF550/TS550	5500	5500	2475	2490	2540	1295	1310	1360	1295	1764	1719	6	6	1700	2600	2000	2200	2675	3000	1700	2525	1900	2200	2575	2900	4022	4550	4746	4159	4636	4837					
	TF600/TS600	6000	6000	2675	2690	2740	1495	1510	1560	1495	1964	1919	6	6	1150	1600	1100	2100	2575	2900	1150	1750	1000	2100	2475	2800	4087	4620	4818	4224	4706	4909					
	QF610	6115	6115	2160	2175	2225	997	995	1045	997	1449	1449	3	3	1600	1800	1850	2350	2830	1530	1710	1850	1750	2220	2750	4297	4767	4893	4433	4854	4969						
	QF660	6615	6615	2360	2375	2425	1197	1195	1245	1197	1649	1649	3	3	1500	1700	1850	2200	2700	1430	1610	1750	1650	2070	2600	4356	4827	4952	4492	4914	5029						
4-Stage Full Free Lift	QF700	7015	7015	2460	2475	2525	1297	1295	1345	1297	1749	1749	3	3	1400	1500	1500	2150	2580	1330	1420	1400	1600	2020	2460	4387	4857	4983	4523	4944	5059						
	QF745	7465	7465	2610	2625	2675	1447	1445	1495	1447	1899	1899	3	3	1100	1200	1000	2050	2440	1040	1120	900	1510	1930	2340	4433	4903	5029	4569	4990	5105						
	QF790	7915	7915	2760	2775	2825	1597	1595	1645	1597	2049	2049	3	3	700	750	550	1000	1100	1300	650	680	500	920	990	1200	4533	5004	5129	4669	5091	5206					

\* TS-Mast : Wide Visible 3 Stage Full Free Lift Mast with 2 Free Lift Cylinders.

## Load Capacity



## Optional Items

- CABIN & HEATER
- SIDE SHIFT / INTEGRAL SIDE SHIFT
- FORK (L x W x T) (mm)
 

25LF-7	900 x 100 x 45	1,000 x 100 x 45	1,050 x 100 x 45
	1,200 x 100 x 45	1,350 x 100 x 45	1,500 x 100 x 45
	1,650 x 100 x 45	1,800 x 100 x 45	1,950 x 100 x 45

- 30/33LF-7
 

900 x 122 x 45	1,050 x 122 x 45	1,150 x 122 x 45
1,200 x 122 x 45	1,350 x 122 x 45	1,500 x 122 x 45
1,650 x 122 x 45	1,800 x 122 x 45	1,970 x 122 x 45
2,120 x 122 x 45	2,300 x 122 x 45	2,400 x 122 x 45
- OVER SHOE(mm) : 1,300, 1,500, 1,700, 1,800
- TILTING : 6/6°, 3/3°
- TIRE : Cushion, No-marking, Double

- SEAT : Pocket, Arm Rest, Hip Rest
- LPG CLAMP : Swing Out, Swing Down
- M.C.V : 4-Spool
- ATTACH PIPING : 3 Spool-piping, 4 Spool-piping
- MASTER SWITCH / HAZARD SWITCH
- BEACON LAMP / WORK LAMP
- SPEED CONTROL SENSOR
- PRECLEANER